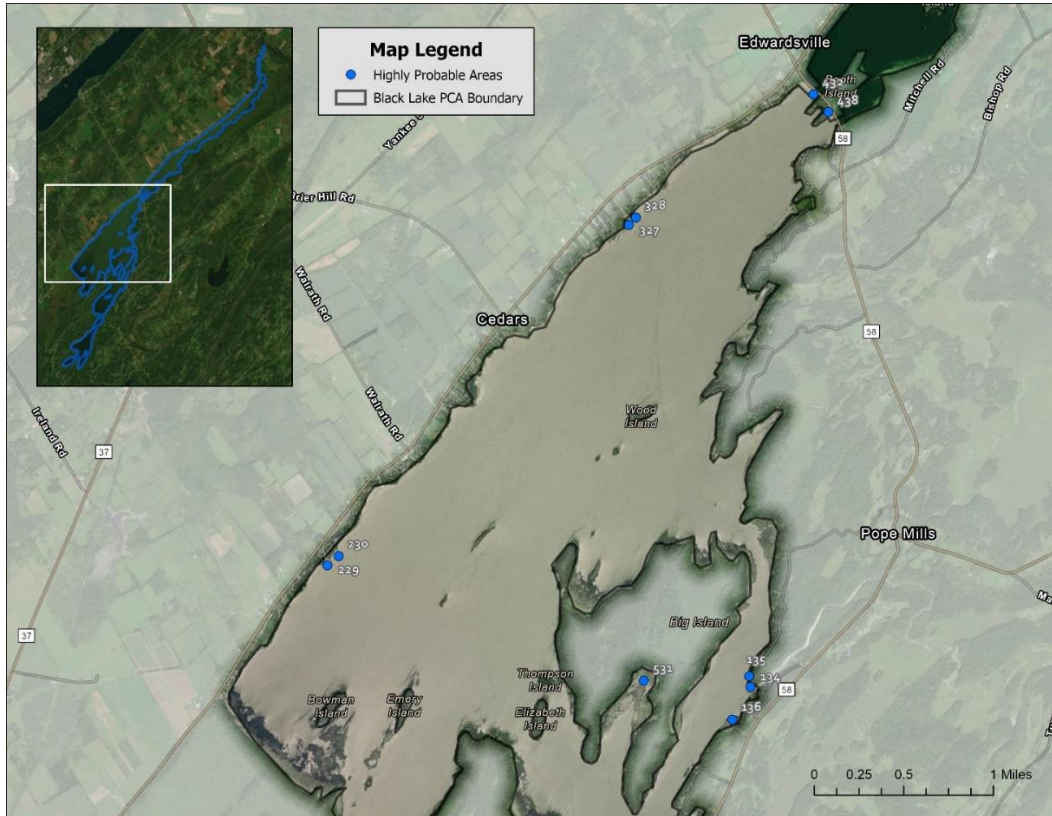


Black Lake

Black Lake PCA was surveyed in July 2020 by Brittney Rogers and Robert Smith. SLELO staff examined ten HPA's for aquatic invasive species (Map 1) using visual surveys and rake tosses. Data was recorded using iMapInvasive's Simple Aquatic Survey (SAS) Pro mobile monitoring tool.

The first report of water chestnut at Black Lake was received by members of the public, but no plants were found during surveys by SLELO Staff. A newly found confirmed infestation of water chestnut is present to the north on the Oswegatchie River. This infestation presents a threat to Black Lake and many other PCAs in the region; early detection monitoring efforts will continue.



Map 1. Map of Black Lake HPAs examined by SLELO staff in 2020.

The following **Invasive Species** were found:

Invasive Species	Tier Ranking	HPA's Affected
Curly-leaved pondweed	4	3
Eurasian water-milfoil	4	9
European frog-bit	4	2
Zebra mussel	4	4
Banded mystery snail	*	2

* Species is not currently ranked

NO NEW TIER 1 OR TIER 2 SPECIES WERE DETECTED IN 2020