

Calling All Hikers



Webinar
10.29.20
1pm-2pm
EST

PROTECT YOUR

Hemlocks



Welcome

Chatbox Icebreaker

- Name
- Where You're From
- Trail You Plan to Hike/Snowshoe

Today's Purpose: To recruit volunteers to keep an eye out for hemlock woolly adelgid.

What We'll Cover:

- Who is SLELO PRISM & the Hemlock Initiative
- Intro to hemlock woolly adelgid
- iMapInvasives mobile app live-demo
- Volunteering within SLELO and beyond.
- Volunteer Experience



INVASIVE SPECIES MANAGEMENT

SAINT LAWRENCE
EASTERN LAKE ONTARIO

SLELO is Hosted by:
The Nature Conservancy

Where We Work:

Oneida
Oswego
Jefferson
Lewis
St. Lawrence

What We Do:

Collaborate with our partners to protect our lands and waters from the impacts of invasive species.



**Protecting our Lands and
Waters From the Impacts
of Invasive Species**

www.sleloinvasives.org

Follow us on Facebook

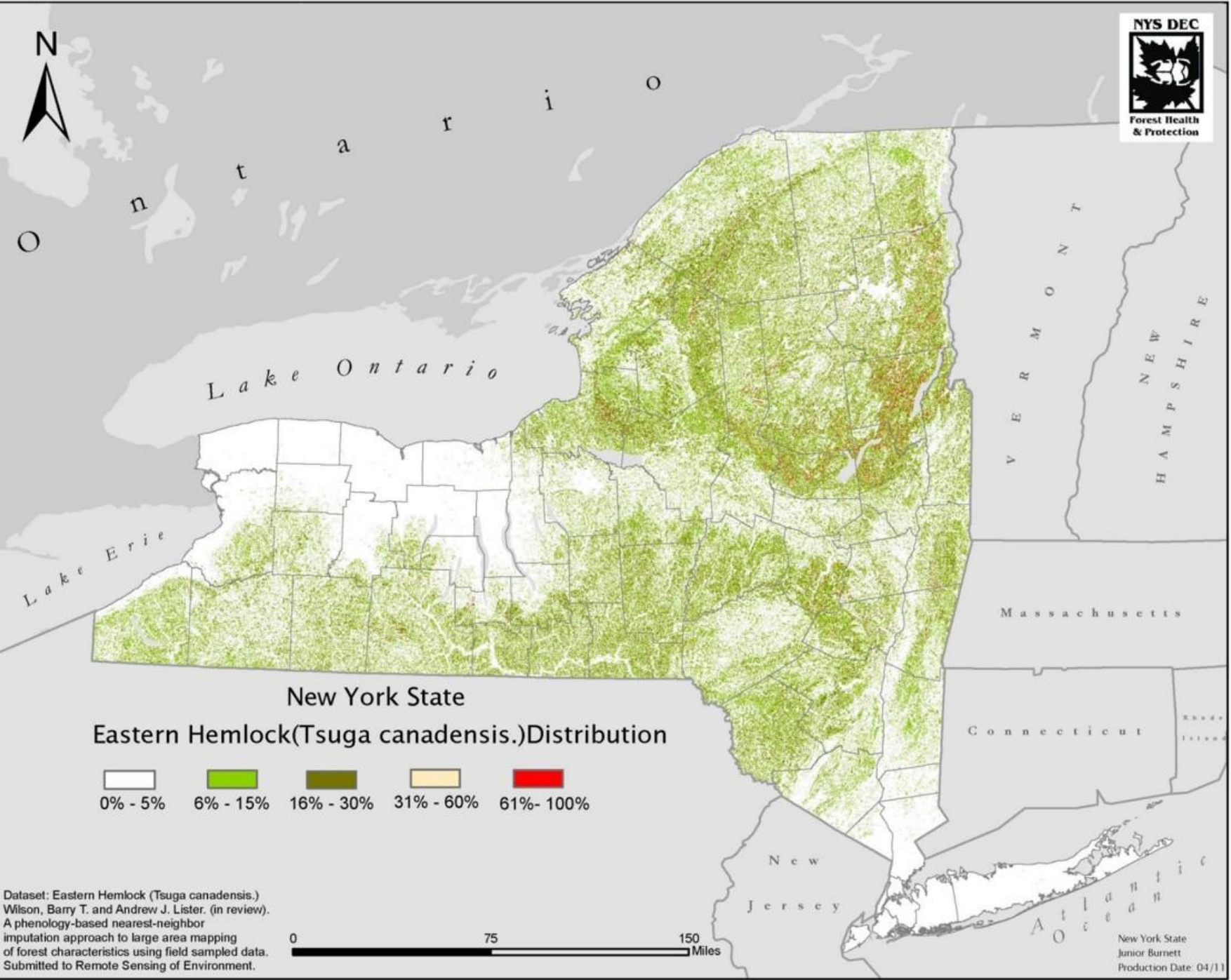


*Caroline
Marschner*



Why Care About Hemlocks?





Hemlocks
 are the
third most
common
 tree species
 in New York

A photograph of a forest scene. In the foreground, a green and white tent is pitched on a dirt clearing. The forest is filled with tall, thin trees, likely hemlocks, with sunlight filtering through the canopy. In the background, a stream flows through the woods. The text "Hemlocks are a Foundation Species" is overlaid in white, bold font on the lower half of the image.

**Hemlocks are a
Foundation
Species**

Hemlocks Fill a Niche

Hemlocks often grow
on steep slopes and in
shady areas.

Hemlocks Support the Food Web

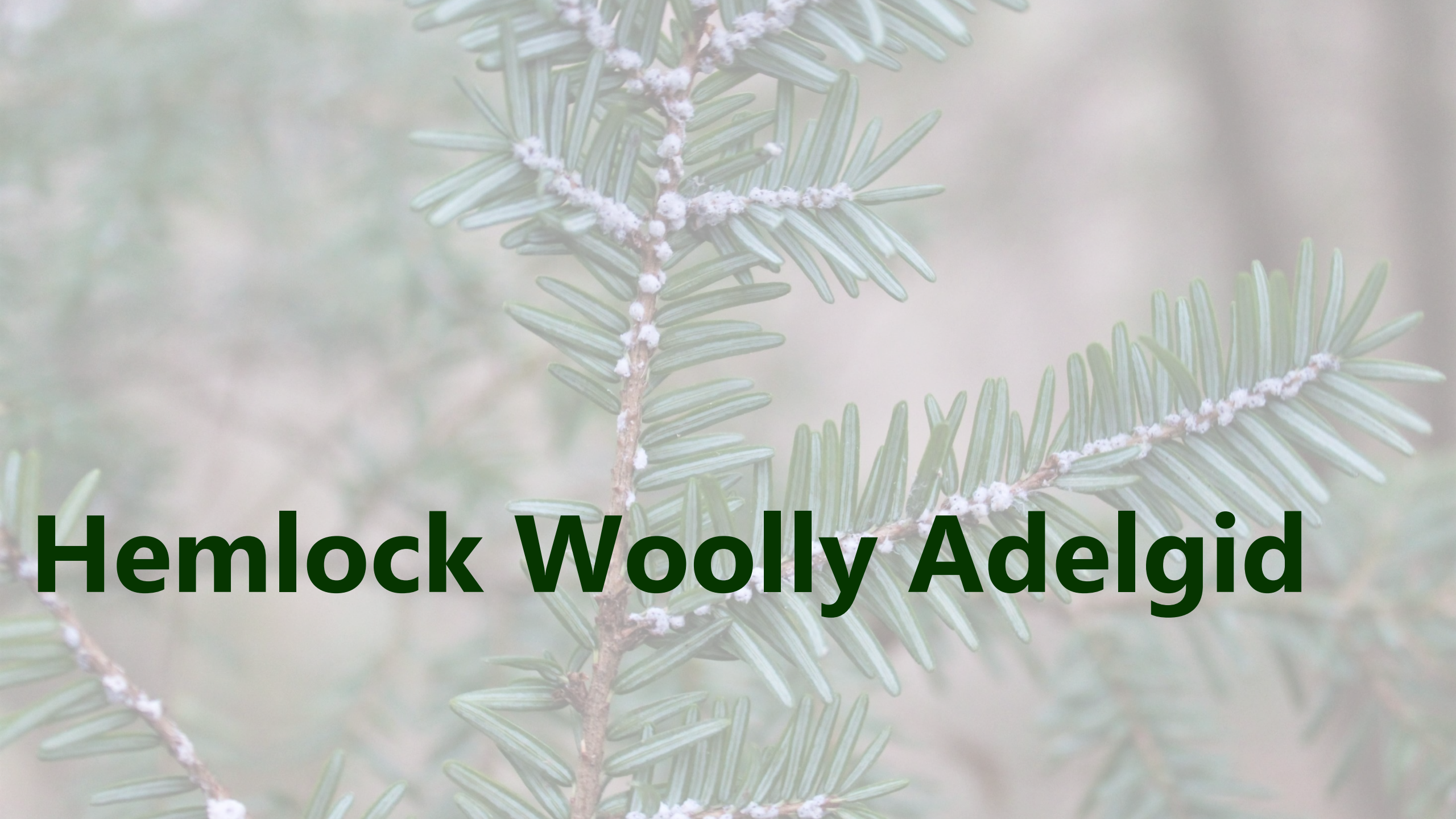
Hemlocks provide habitat
and food for **over 400
forest species** including
birds, mammals, and
arthropods.



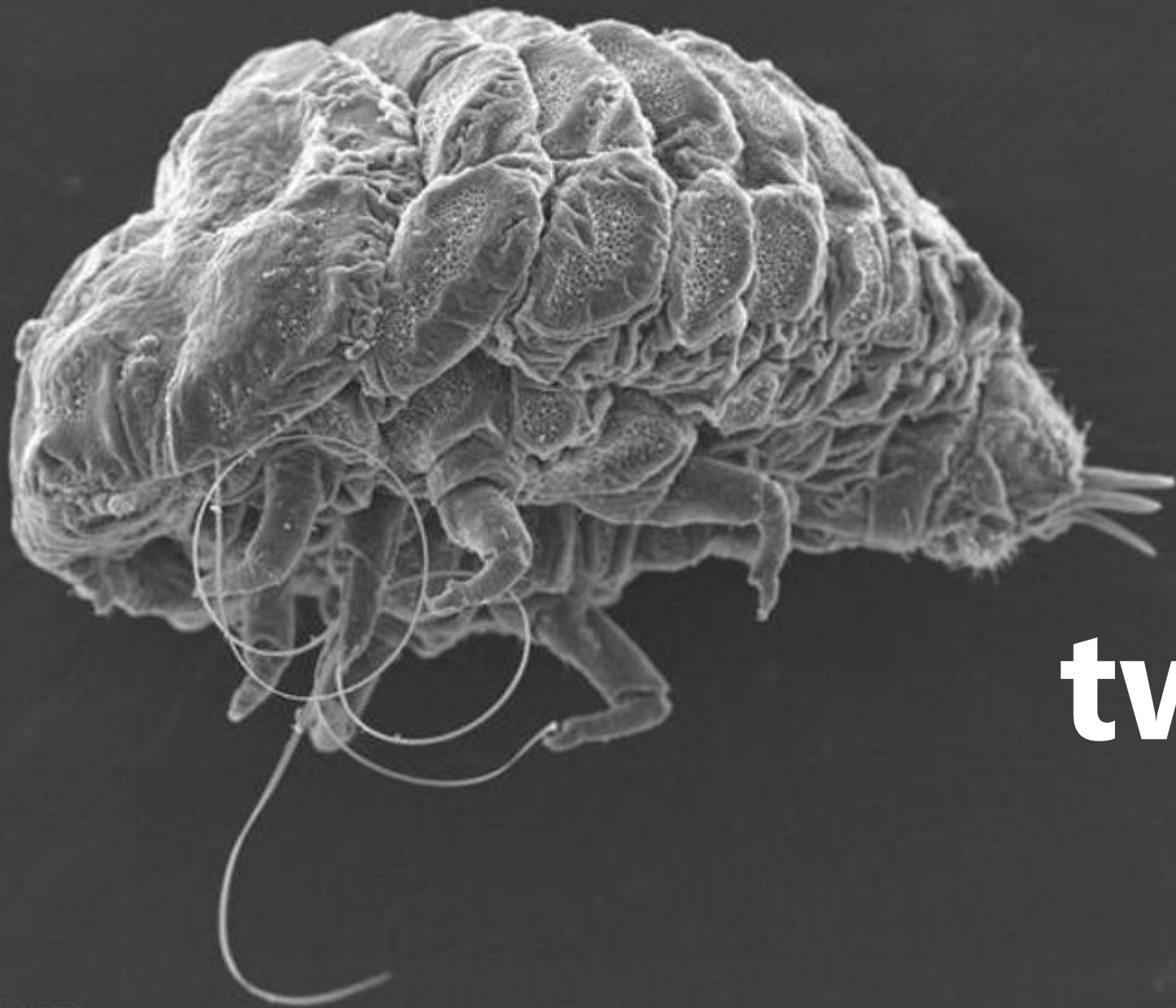


Hemlocks Provide Ecosystem Services

**Hemlocks help
keep freshwater
streams cold
and clean.**



Hemlock Woolly Adelgid



Feeding
damages
hemlock
twig tissue

20 kV

0008

100µm

5449453

An aerial photograph of a dense, green forest. A river or stream flows through the center of the forest, winding its way from the bottom towards the top of the frame. The trees are thick and cover the entire landscape. The text '4-20' is overlaid in a large, bold, orange font in the upper left quadrant.

4-20

years to kill tree

**Look For
white, waxy,
woolly masses
on hemlock
twigs**



November-May



**Before lots of
wool...**



HWA Look-alikes



Spider egg sac



**Elongate
Hemlock Scale**



Spittlebug foam

HWA Look-alikes



Oak Skelatonizer



**Hemlock
Needleminer**



Bird poop



Pine sap



Snow!



HWA Survey Tips



Survey **November through May***



Consider **tree health**



Look for branches **on the ground**



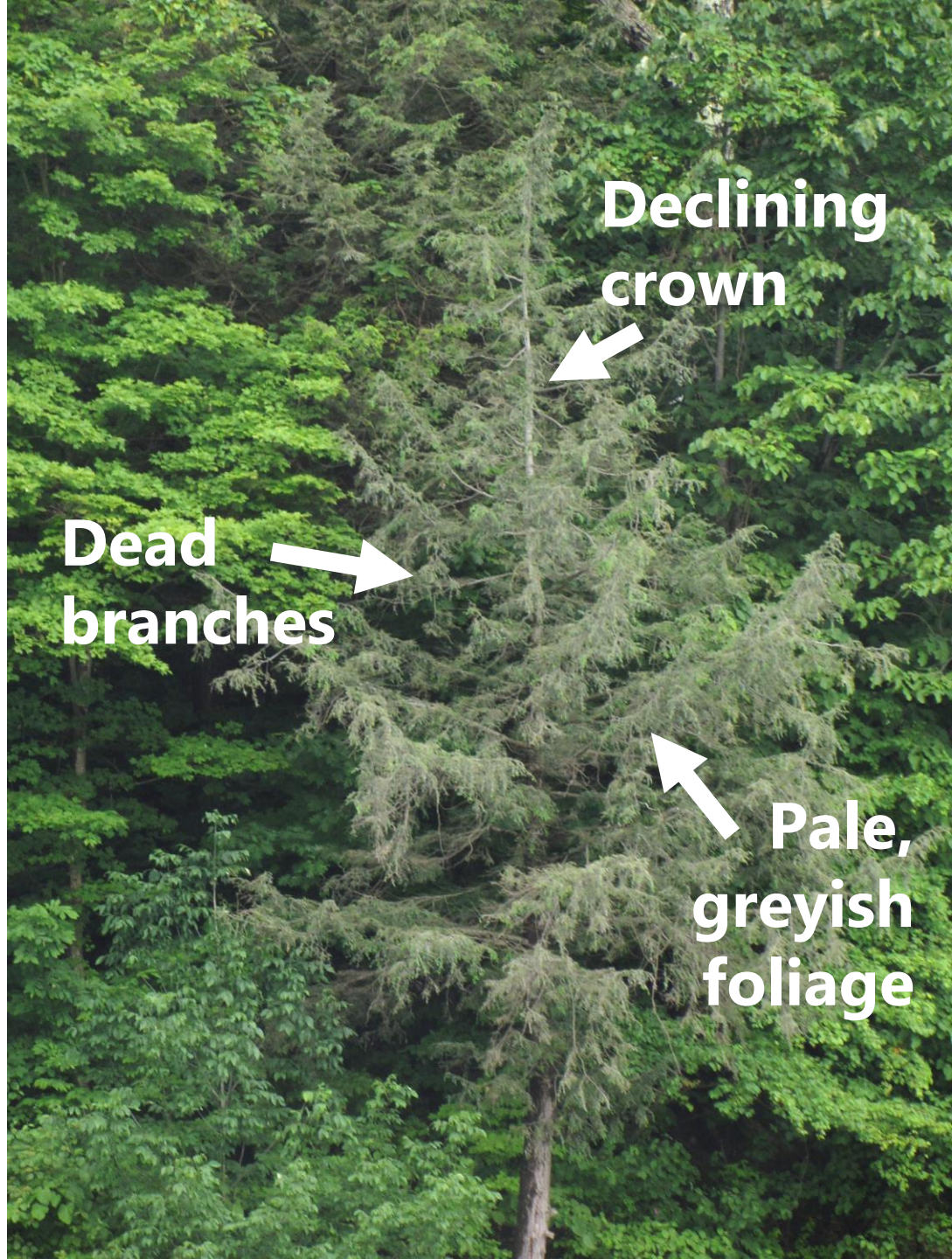
Survey trees with **branches in reach**



Look at **underside of twig**



Check branches **on all sides of tree**



Step Four

Assess overall tree health



Check **canopy health** and density



Report **needle loss** or presence of **dead branches**





*iMap*Invasives

- Mobile App Live Demonstration

Volunteers searching for HWA at the
Trenton Greenbelt trails with Tug Hill
Tomorrow Land Trust



Volunteering For Hemlocks



www.sleloinvasives.org



HWA Hunters

[Click Here](#)



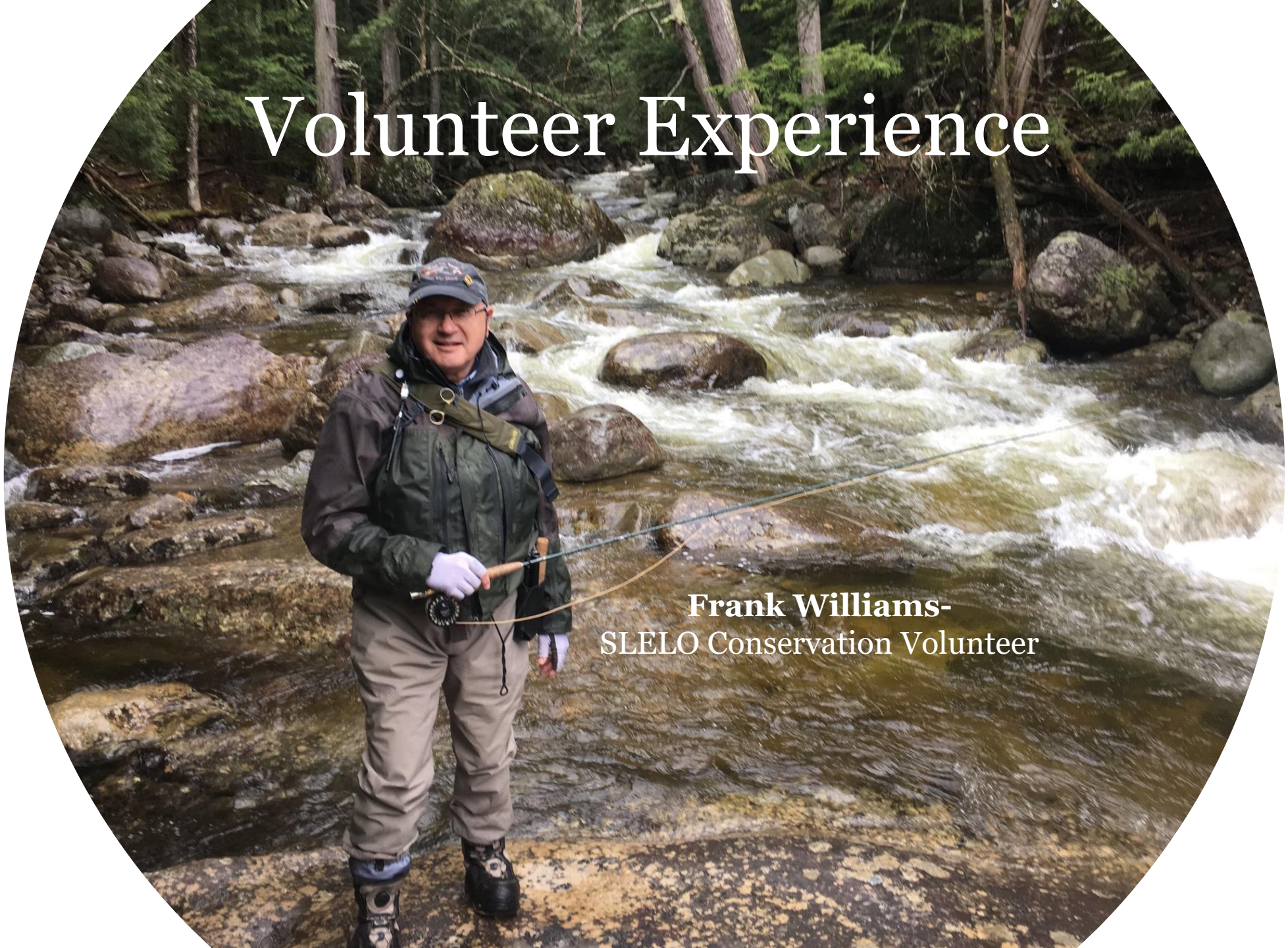
HWA Boat Surveys

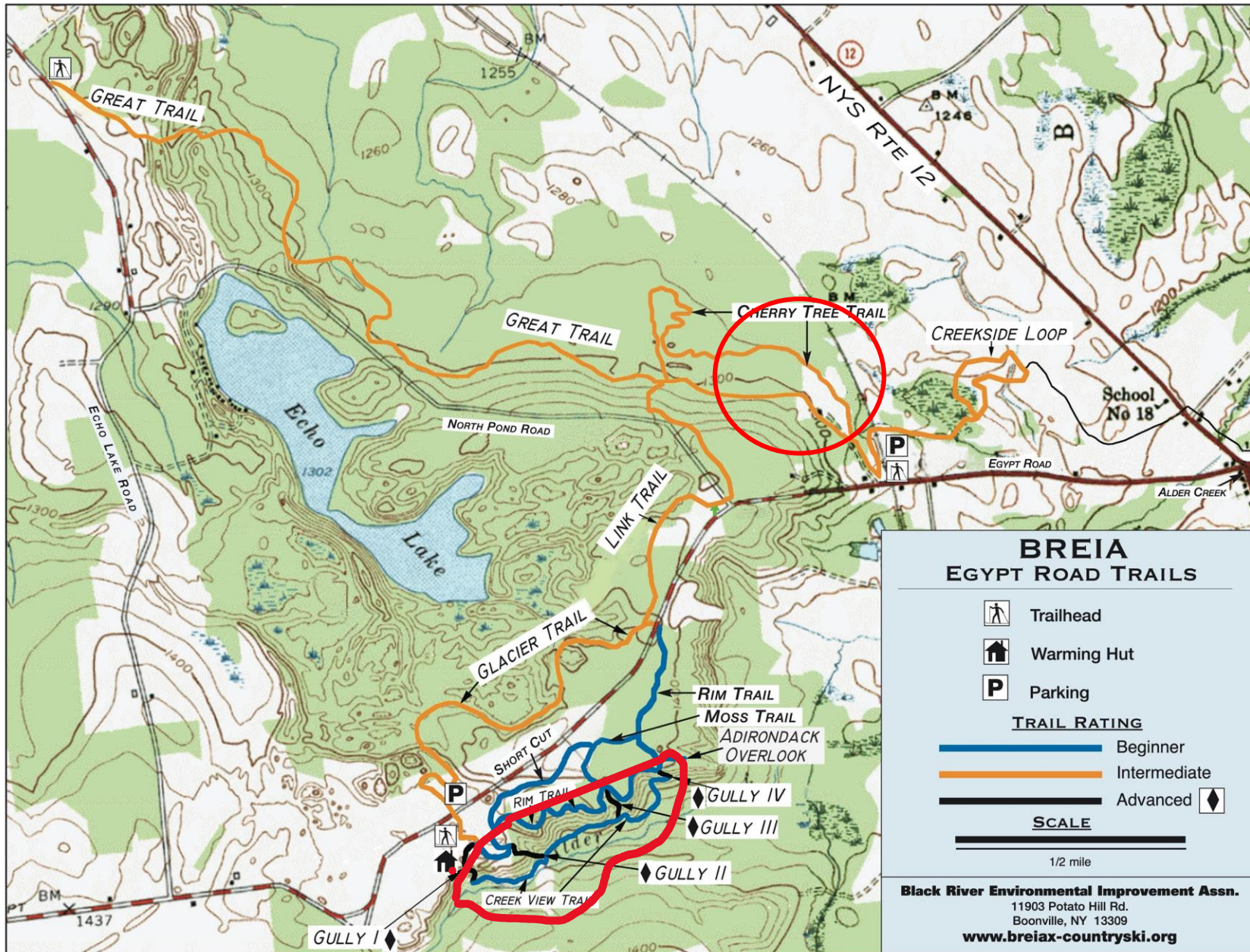
[Coming Soon](#)



Volunteer Experience

Frank Williams-
SLELO Conservation Volunteer





BREIA Trails
Egypt Road
Alder Creek,
NY.

Red line outlines
hemlock stands.

BREIA PARKING (UPPER EGYPT RD)



CHERRY TREE TRAIL (BREIA)



BrEIA
Trails —
Egypt Rd.
Alder Creek,
NY

BREIA SKYFIELDS ON JACKSON HILL

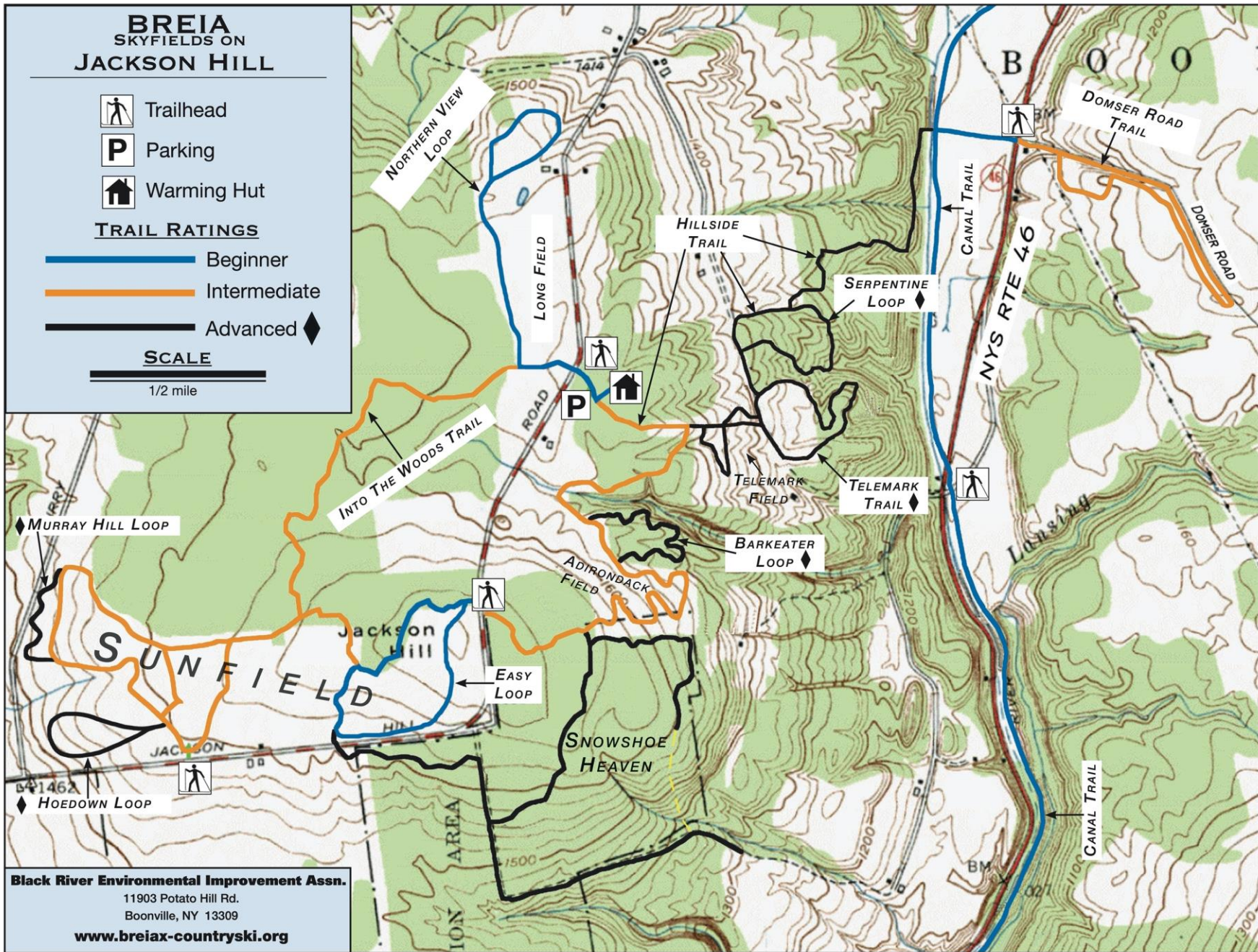
-  Trailhead
-  Parking
-  Warming Hut

TRAIL RATINGS

-  Beginner
-  Intermediate
-  Advanced

SCALE

1/2 mile



Black River Environmental Improvement Assn.
11903 Potato Hill Rd.
Boonville, NY 13309
www.breiax-countryski.org

BREIA – Jackson Hill

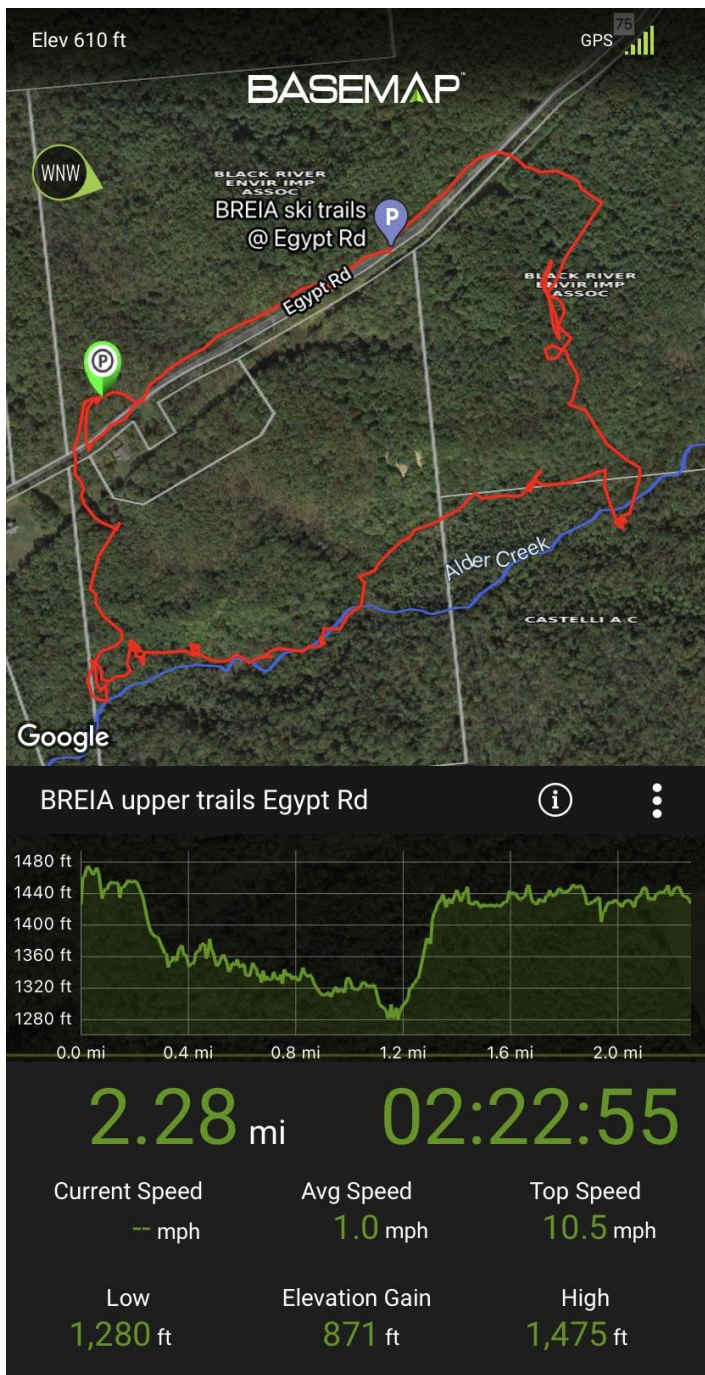
“To be
surveyed”

Large area: help
needed



Jackson Hill State Forest

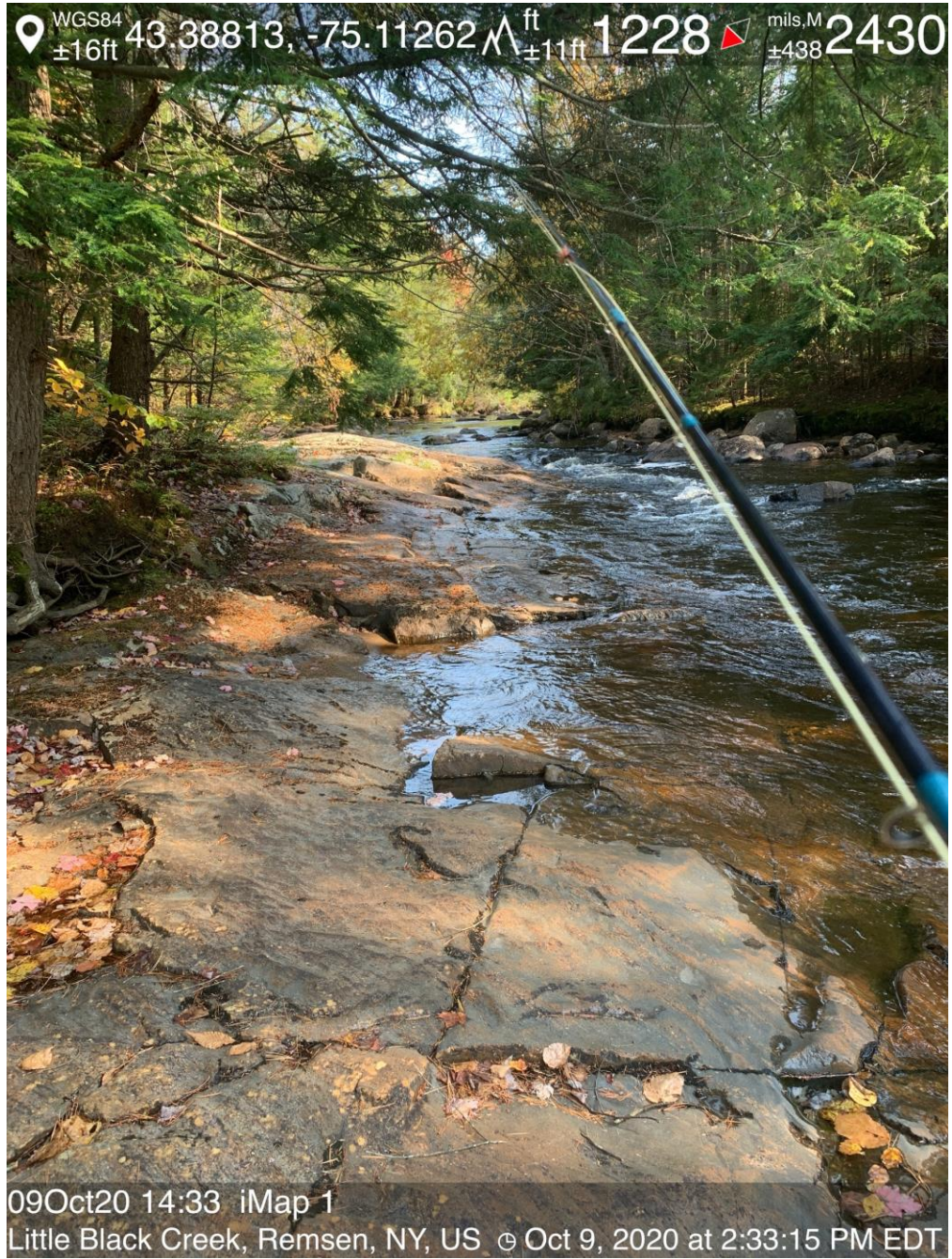
- Adjacent to BREIA Jackson Hill
- Some BREIA trails go into JHSF
- Area along Clark Brook needs to be surveyed (**Green outline**)
- Screenshot taken in *BaseMap app*.



BREIA Trails – Hemlock Stands

Left – BaseMap app

Right – Alder Creek



Little Black
Creek –
Remsen, NY

Hemlocks
need To Be
Surveyed

Roberts Rd

Apps I Use

Useful apps for photos with GPS, et al.

- GPS Camera 55 Pro
- SEEK (iNaturalist)
- BaseMap
- All Trails





GPS Camera 55

Gives Photos with

- GPS Coordinates
- Elevation
- Direction
- Date, time and address

Use for all photos of twigs,
canopies.

Good for record keeping



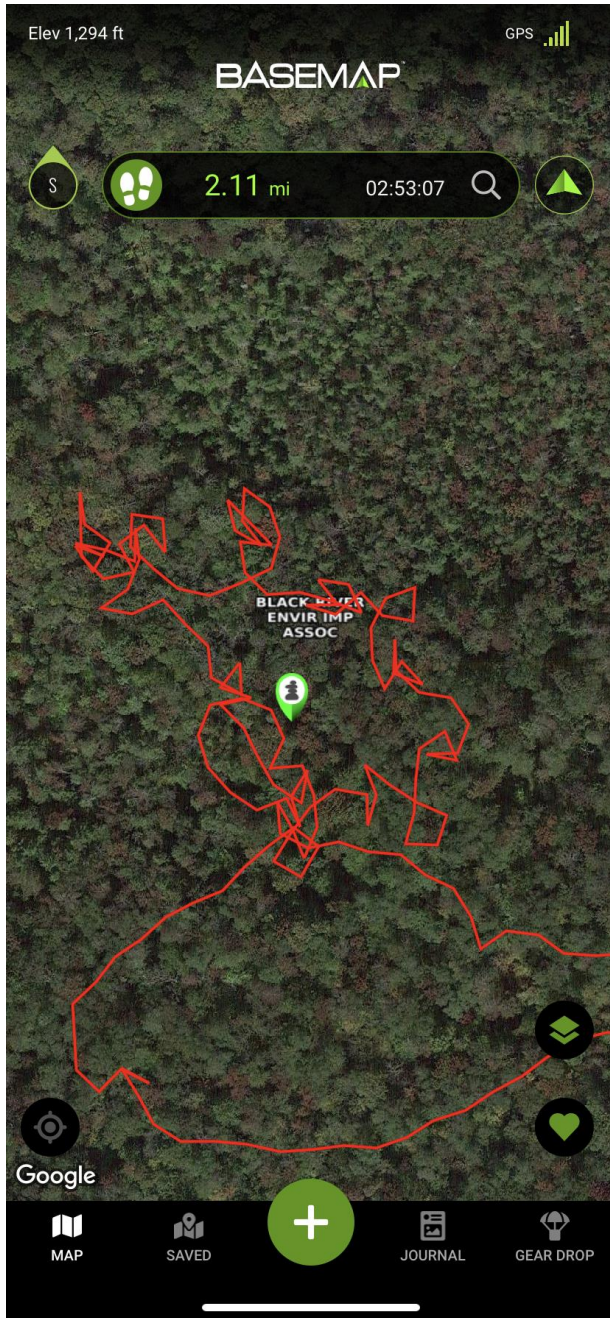
Measure App

- Take a measurement of a surface
- Photo with the measurement
- Used for Tree Diameter at Breast Height
- Available: iPhone and Android
- Another good one is "Air Measure"



“Layout” app, by Instagram

- Use to create a collage of photos for one observation
- iMap app can only upload one photo per observation

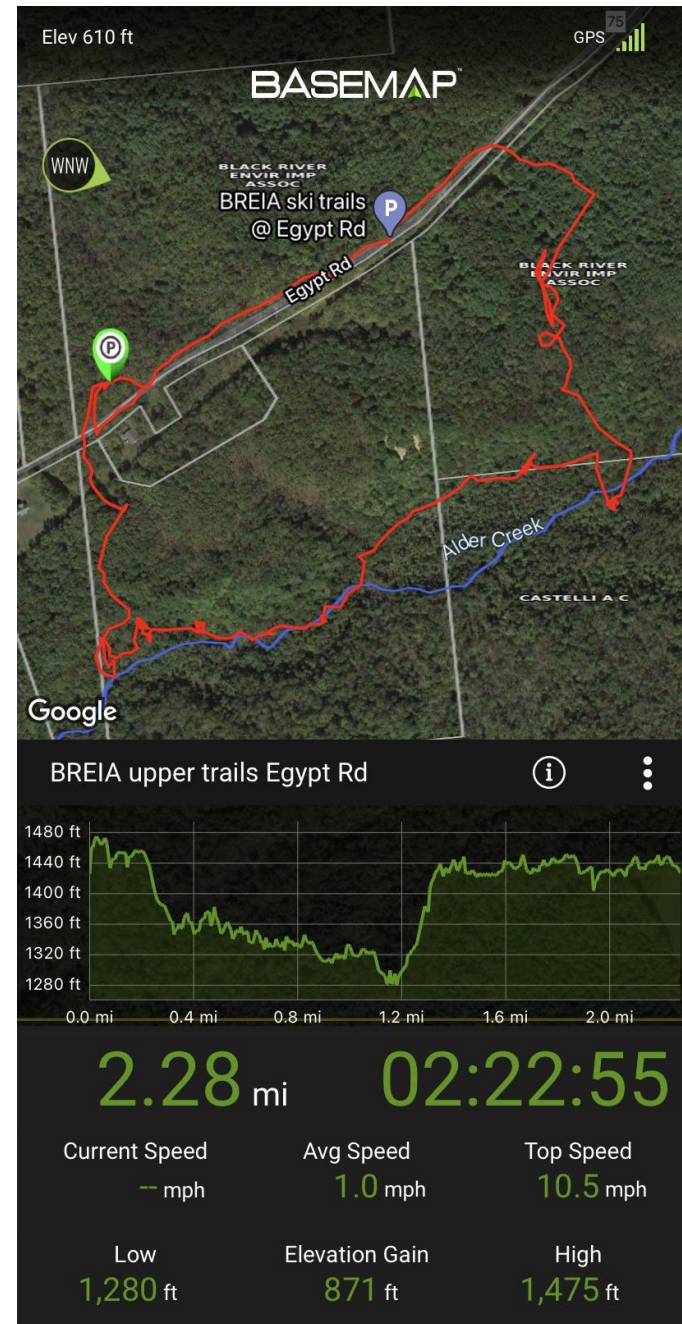


BaseMap

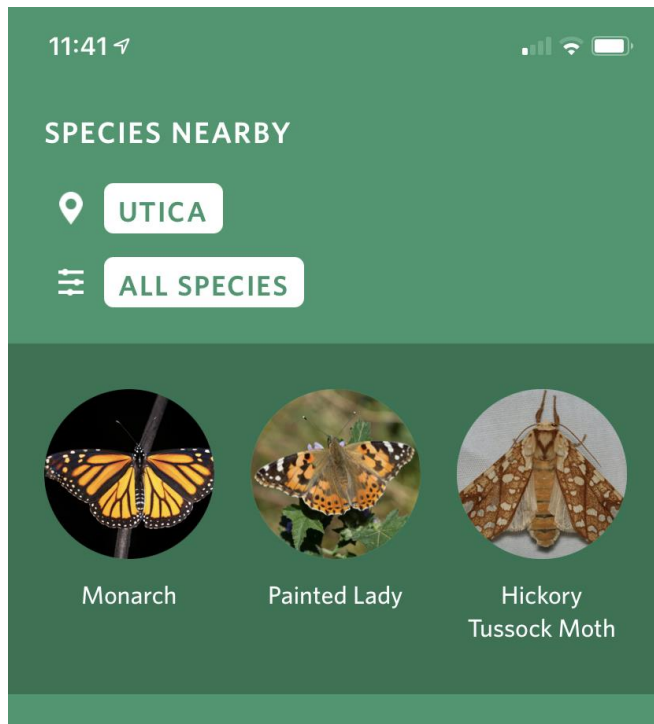
- Tracking
- Map markers
- Offline maps
- Website for planning treks
- Shows Land Ownership

Other options

- GAIA



BaseMap app



Seek (iNaturalist)

Identifies wide range of plants, insects, etc.

CHALLENGES





FRANK WILLIAMS – *CONSERVATION VOLUNTEER*
CONTACT INFORMATION

Cell Phone: (315) 794 - 1031

Email: frwill48@gmail.com

Lets Hike!

Questions



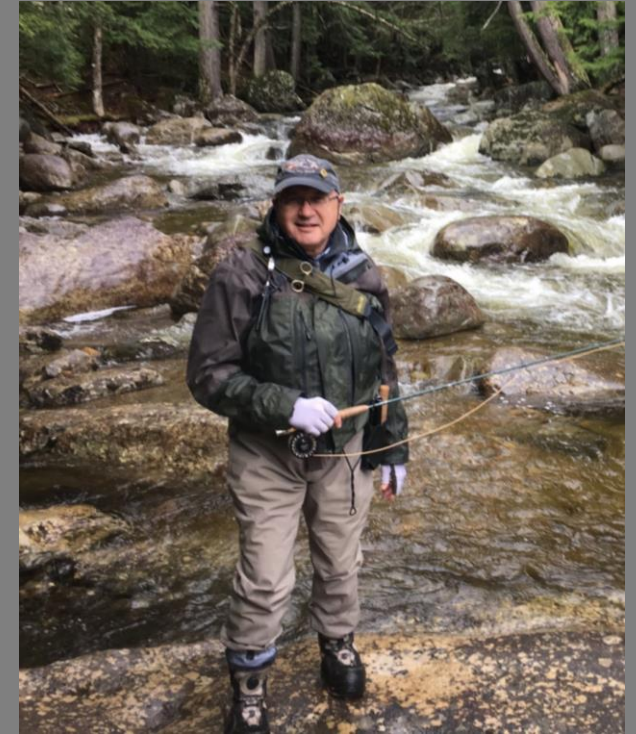
Megan Pistolese
Education Outreach
Coordinator
SLELO-PRISM

Megan.Pistolese@tnc.org



Carrie Marschner
Invasive Species
Extension Associate
Hemlock Initiative

cam369@cornell.edu



Frank Williams
SLELO-PRISM
Super Volunteer

frwill48@gmail.com